



# **The Ultimate Box**

**User Manual**

## **FCC Regulations Compliance (for USA)**

This equipment has been tested and found to comply with the limits for Class B digital device pursuant to Part 15 of FCC Rules. These limits are designed to provide reasonable protection against harmful interference in a residential installation. This equipment generates, uses and may radiate radio frequency energy and, if not installed and used in accordance with the instructions, may cause harmful interference to radio communications. However there is there is no guarantee that interference will not occur in a particular installation. If this equipment does cause interference to radio or television reception, which can be determined by turning the equipment off and on, the user is encouraged to try to correct the interference by one or more of the following measures: (1) Reorient or relocate the receiving antenna (2) Increase the separation between the equipment and receiver (3) Connect to an outlet on a different circuit.

This equipment has been certified to comply with FCC standards, which are applied to the USA only. A shielded interface cable should be used according to FCC 15.27(C).

Changes or modifications not expressly approved by the manufacturer could void any assurances of safety or performance and could result in violation of Part 15 of the FCC Rules.

## **Canadian Department of Communications Statement**

This digital apparatus does not exceed the Class B limits for radio noise emissions from digital apparatus set out in the Radio Interference Regulations of the Canadian Department of Communications. This Class B digital apparatus complies with Canadian ICES-003.

## **Radio Interference (210-240V)**

This equipment Complies with EN55022 (CISPER Publication 22)/Class B.

## **Content:**

- Introduction
- Package Contents
- Minimum System Requirements
- Hardware Installation
- Software Installation
- Software Configuration
- Screen features and menu options.
- Writing to Embroidery Cards
- Reading Embroidery Cards
- Troubleshooting

## Introduction

*The Ultimate Box* allows you to write to a blank embroidery card as many designs as the card can hold. The best results are achieved by using *The Ultimate Box*<sup>™</sup> with *The Ultimate Card*<sup>™</sup> that holds about 500,000 stitches total. You can write designs in PES format for Brother, Baby Lock, Bernina Deco, Simplicity formats and White or, in HUS format for Viking/Husqvarna embroidery machines.

*The Ultimate Box II* is equipped with the second card slot that, in addition to capabilities of *The Ultimate Box*, allows working with cards for Pfaff and Bernina Artista.

**NOTE! Any information that applies to *The Ultimate Box*, also applies to *The Ultimate Box II*. Additional functions performed only by *The Ultimate Box II* are specified throughout this manual.**

You can save designs to your computer by downloading them from the Internet, embroidery design cards, CD's, floppy disks, etc. Using the browsing software supplied, you will browse to the Designs folder, select desired patterns and transfer them to the card.

*The Ultimate Box* writes to and reads from the following cards:

- |   |   |
|---|---|
| <i>The Ultimate Card, Ver. I and II</i> | – 1Megabyte (8Megabit) blank memory card, the largest Brother type embroidery machines can read.  |
| Magic (Amazing) Card                    | – 512Kilobyte blank memory card supplied with the Amazing (Magic) Box. <i>The Ultimate Box</i> writes more than 6 designs to this card. |
| Brother Blank card                      | – 512Kilobyte (4Megabit) blank card supplied for Brother PE Design 4.0 read/write modules.  |
| <i>The Ultimate Card, Ver. III</i>      | – 512Kilobyte blank memory card for Pfaff and Bernina Artista machines. <i>The Ultimate Box II</i> is required.                         |

*The Ultimate Box* reads and saves designs back to the hard drive of your computer from cards mentioned above and pre-programmed design cards.

Any Embroidery software available on the market to create or edit designs can be used with *The Ultimate Box*.

## Package Contents

- Embroidery Card Reader / Writer Box
- Re-writable Embroidery Card
- USB Cable
- Manual
- Installation CD
- Warranty Registration Card

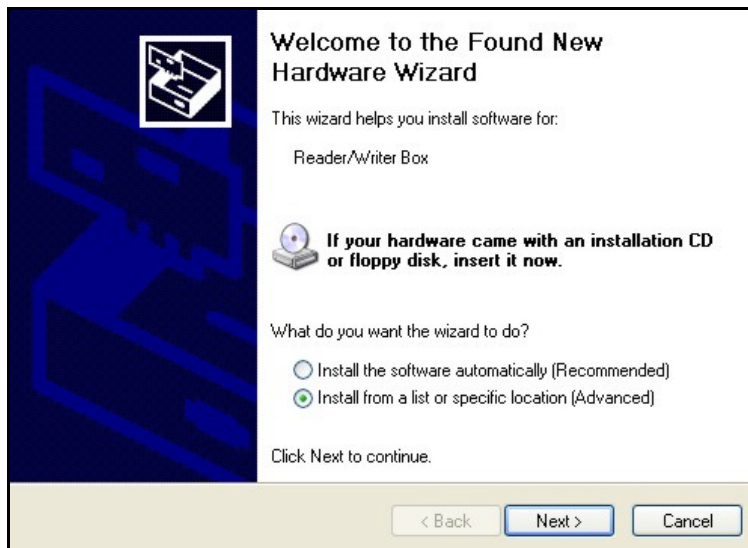
## Minimum System Requirements

- IBM PC Compatible\*
- Pentium 166 MHz
- 32 Mb Memory
- 16 Mb Available Hard Drive Space
- USB Port
- MS Windows 98/ME/2000/XP
- Screen Resolution 800x600
- CD ROM Drive

\* MAC users must have “Virtual PC” installed to work with *The Ultimate Box*

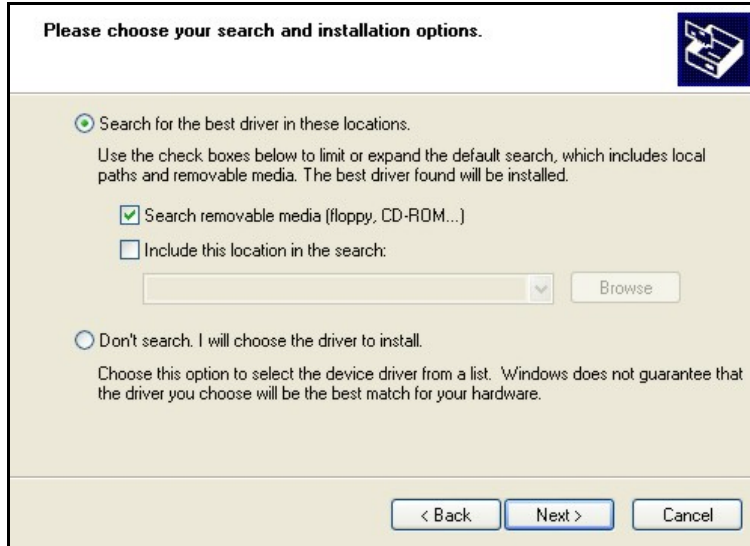
## Hardware Installation

1. Verify Package Contents
2. Insert the **Ultimate Box** Installation CD into the CD-ROM drive of your computer.
3. Connect USB Cable to the *Card Reader / Writer Box*.
4. Attach the other side of the cable to a **USB Port** of your Computer. You can also connect the card reader/writer box to a USB Hub as long as the hub has its own power source.
5. After a short delay, Windows will display the **Add New Hardware** dialog box.
  - If you are running Windows XP, choose “Install from a list or specific location (Advanced)” on the first wizard and click **NEXT**.
  - Otherwise, click **NEXT**.



*Windows XP Install Hardware Dialog*

6. Make sure that “Search for the best driver for your device (Recommended)” is selected and then click **NEXT**.



*Allow Windows to search your CD  
for the best hardware driver.*

7. The next step depends on the version of Windows installed on your computer. If **Card Reader / Writer** appears, click NEXT.

**Note!!!** With WindowsXP the following message will be shown: “The software you are installing for this hardware: Card Reader/Writer has not passed Windows LOGO testing to verify it is compatibility with Windows XP. Continuing the installation of this software may impair or destabilize the correct operation of your system either immediately or in the future. Microsoft strongly recommends that you stop the installation now and contact the hardware vendor for software that has passed the Windows LOGO testing”.

Since it is a standard message for any non-Microsoft software, use **CONTINUE ANYWAY** option to finish installation.

8. The final dialog of the Add Hardware wizard is displayed. Click **FINISH**. You do not need to restart your computer even if it is directed by the Windows operating system. At this point the light on the Ultimate Box should be **ON**.

**Important!** Power is supplied to *The Ultimate Box* via the USB connection. If the box is connected to a USB hub, be sure that the hub has its own power source or the box may not have enough power to operate correctly.

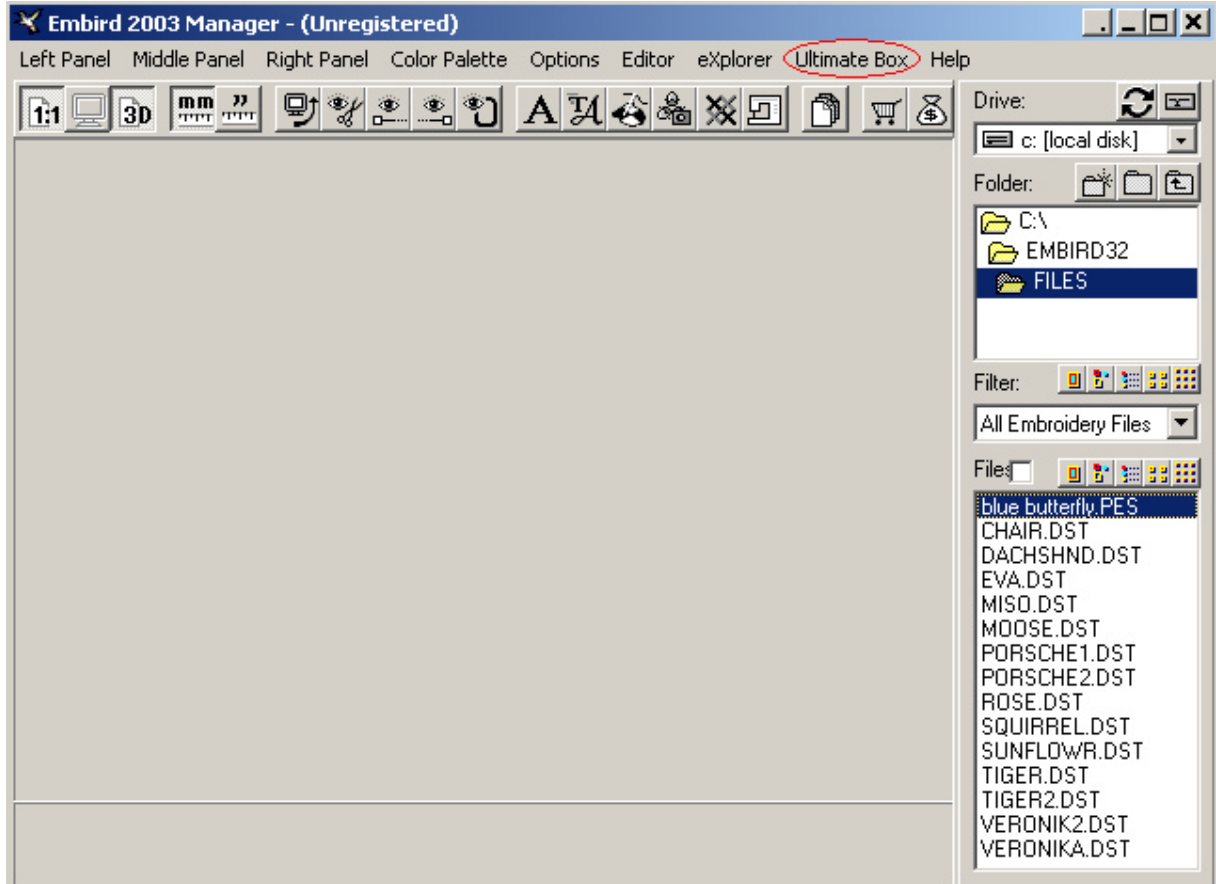
## Software Installation

The following procedure will install **Ultimate Box** software to your computer and create a shortcut on your Windows desktop.

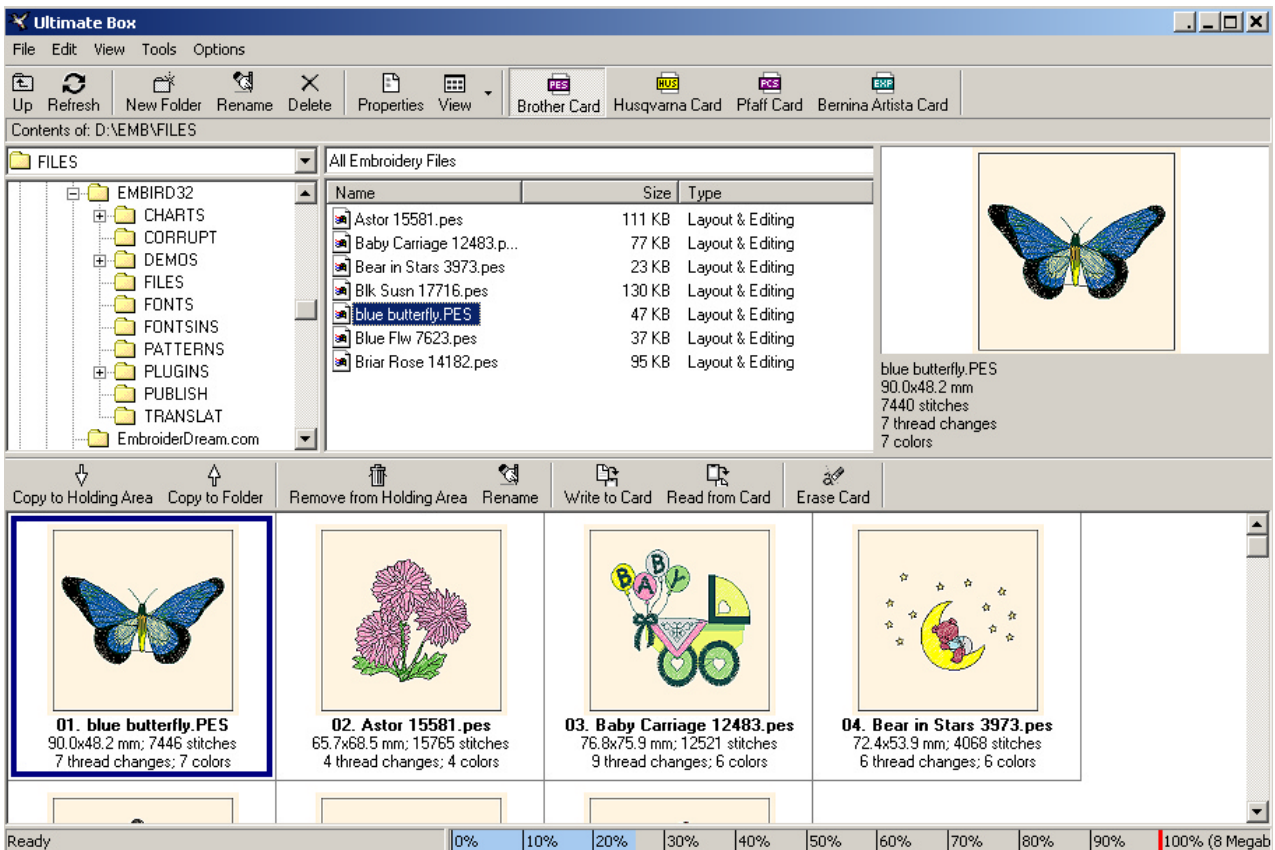
1. Insert Installation CD into the CD drive.
2. Go to “**My Computer**”, select and open the CD drive.
3. Double click on **Embrd2k3.exe** and follow the onscreen installation instructions. Several screens will be opening up. For faster and proper installation follow these directions:
  - Click on **SET UP** to start installation.
  - Choose preferred installation language and press **OK**.
  - Accept the Terms** and click on **INSTALL**.
  - On **Shell Integration Setup** screen select **NONE**, and press **OK**.
  - Click **OK** to the message **Installation Successful!**
  - Close the browser window.
4. When installation is completed, double-click on **Embird 2003** icon on the desktop to start the program. Several screens will be opening when you use this software for the first time. For faster and proper configuration please follow this directions:
  - Click **OK** to the message about software being **Unregistered**.
  - Click **OK** to the message about **Non-standard floppy disk operation**.
  - Select preferred software language, and press **OK**.
  - On **Display Calibration**, just press **OK**.
  - On the next screen **CONFIRM** regarding Association with external applications, click **NO**
  - On **TIP OF THE DAY** screen **uncheck** “Show this screen at startup” and press **CLOSE**.
  - With the Ultimate Box connected click on **Ultimate Box** menu item.

## Screen Basics

The Ultimate Box software is a built-in part of EMBIRD software. Double click on EMBIRD icon form desktop of your computer to start software. Click on **Ultimate Box** on the tool bar (see circled item in the picture below) to start Ultimate Box software.



The Ultimate Box software screen is divided into two main sections.



The top portion of the screen is used to navigate folders on your computer and select designs. It is divided into three areas. The **Folder Tree** (top left) allows you to easily navigate to the folders on your computer. While browsing, double click on folder to open or close it. The full path of the current folder is displayed above this panel (**Contents of:**). The **File Browsing Panel** (top middle) displays files in the currently selected folder. Click on a file to select it and preview it in the Preview area (top right). Above this section is the main toolbar and menus.

The bottom section of the screen is a **Holding Area** for writing, reading and viewing designs on the embroidery card. Directly above the Holding Area is **the Action Bar** which includes the following options:

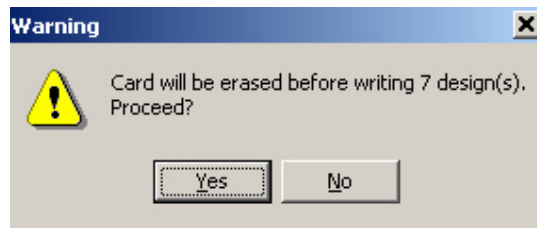
- **Copy to Holding Area** – copies currently selected design(s) to the holding area.
- **Copy to Folder** – copies designs from the holding area to the currently selected folder on your computer
- **Remove from Holding Area** – removes designs from the holding area. If no designs are selected in the holding area, all designs are removed.
- **Rename** – renames a design in the holding area.
- **Write to Card** - starts writing a card (For more details see Writing Embroidery Cards).
- **Read from Card** - starts reading from a card (For more details see Reading Embroidery Cards).
- **Erase Card** – erases the inserted card, the card becomes blank.

## Writing to Embroidery Cards

**WARNING:** All data on re-writable embroidery cards has to be erased before any new information can be written to it. Make sure that any valuable data is saved on the hard drive of your computer or move it to the holding area before you write to the card.

To write designs to the card (make sure the card is in reader/writer box):

1. On the top menu bar, select the type of embroidery card (embroidery format) you want to write. Choose from **PES Card**, **HUS Card**, **Pfaff card (The Ultimate box II is required)** or **Artista card (The Ultimate box II is required)**.
2. Use the **Folder Tree** to navigate to your embroidery designs folder.
3. Select desired design in the **File Browsing Panel** to preview it. To add designs to the Holding Area, click on the **Copy to Holding Area** action button. The bottom status bar shows you the amount of space used on the embroidery card and the amount remaining.
4. When you have finished adding designs to the holding area, click the **Write to Card** action button.

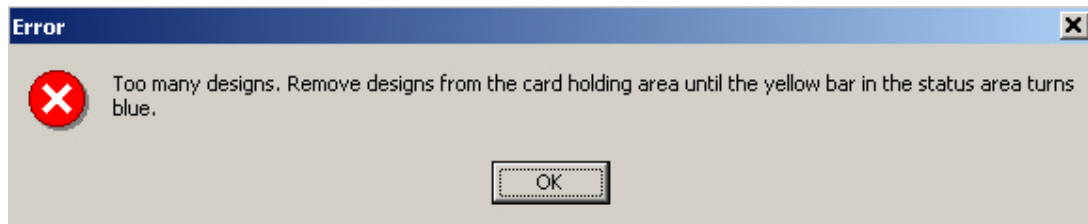


5. As a last reminder, the software will ask you to confirm the **Write** procedure. Select **YES**.

When **WRITE** operation is complete, take the card out of the reader/writer box, insert it into your sewing machine and start embroidering.

### Write Card Error

If you have chosen more design files than will fit on the card, a warning message will appear. You will need to remove some designs from the holding area before you can write to the card.



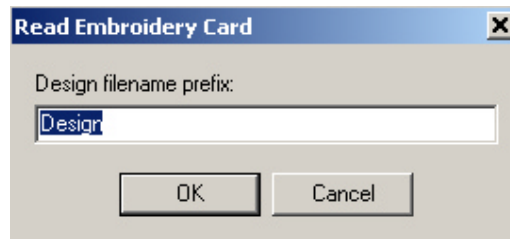
1. Click **OK**.
2. Select a design in the **Holding Area** and click the **Remove** action button. If you forget to select a design or designs, the entire holding area will be cleared.
3. Try to write again.

## Reading Embroidery Cards

All designs in the Holding Area are removed and replaced by the designs on the embroidery card.

To read/save designs from the card to the hard drive of your computer:

1. Click the **Read from Card** action button.



2. If required by the embroidery card, you are prompted for a design filename prefix. Modify this if desired and click OK. Designs will use this prefix and be assigned sequential numbers.
3. The embroidery card is read and the designs are displayed in the Holding Area. This process may take up to 5 minutes.
4. Use the **Folder Tree** to navigate to the desired folder. You can also create a new folder to store the designs using the Create Folder tool bar button. When first created, you can type in a folder name but afterward you must rename it using Windows Explorer.
5. After the destination folder is selected, click the **Copy to Folder** action button.
6. To clear Holding Area, click the **Remove from Holding Area** action button.

To rename Files/Folders:

1. Select desired design or folder, right click on it with the computer mouse and select **Rename**.
2. At the prompt change the file name.

## Troubleshooting

### **Card Reader / Writer Box is not found by Software:**

- Power is supplied to the Card Reader / Writer box via the USB connection. If the box is connected to a USB hub, be sure that the hub has its own power source or the box may not have enough power to operate correctly. Re-plug the USB cables making sure they are firmly attached then try again.

### **If during Read/Write procedure System Error message appears:**

- Close the Card Reader/ Writer software and restart the Reader / Writer box by re-plugging the USB cables making sure they are firmly attached then try again. If the problem persists, contact your dealer or the manufacturer.

## Warranty

This product is covered by a Limited\* One Year Warranty.

Please, check the warranty details in the Owner's **Warranty Registration Card**.

Box and Card Connector defects are not covered by the warranty. Service/repair charge may apply.

## Technical Support

Technical Support is provided by Vikant Corporation via e-Mail at [Service@Vikant.com](mailto:Service@Vikant.com)  
You can also call us at 888-760-8554 X 203, 847-919-9400 X 203 or Fax to 847-808-9803

**Vikant Corporation**  
**6577 Windham Lane**  
**Long Grove, IL 60047**

Vikant Corporation provides full technical support only for the operation of the Ultimate Box. Should you need any help regarding installation or operation of the Ultimate Box, please contact Vikant service department 888-760-8554, 847-919-9400, fax 847-808-9803 or e-mail to [service@vikant.com](mailto:service@vikant.com).  
Vikant Corporation **does not provide technical support for Embird software**.  
With any questions regarding Embird embroidery software, please refer to HELP in the Menu of Embird part of the software program or contact Embird directly through [WW.EMBIRD.COM](http://WW.EMBIRD.COM)